

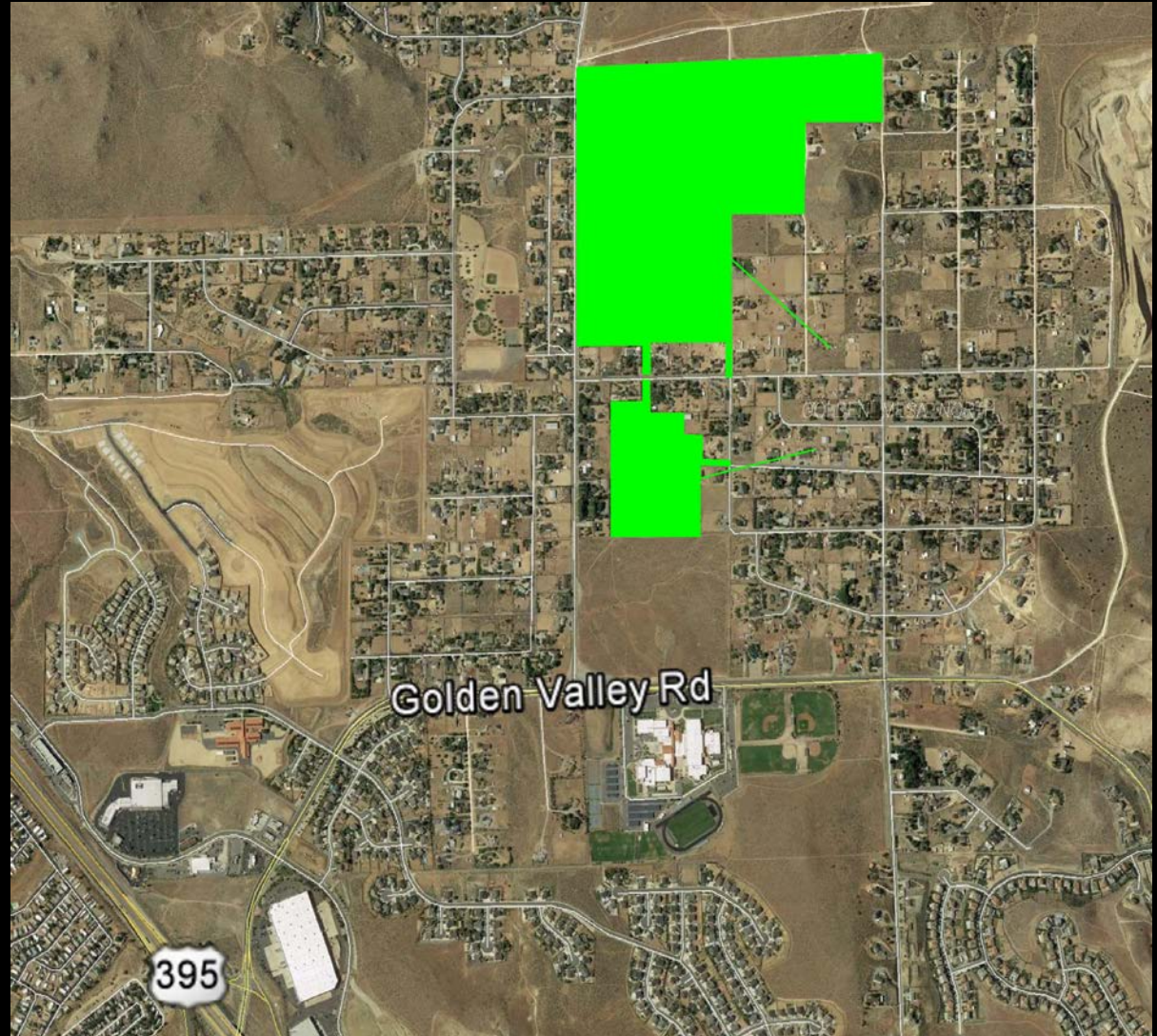
Golden Mesa North

WASHOE COUNTY PLANNING COMMISSION
MARCH 7, 2017

SITE VICINITY

Golden Mesa North

- Located at the corner of Golden Valley Drive and Estates Road

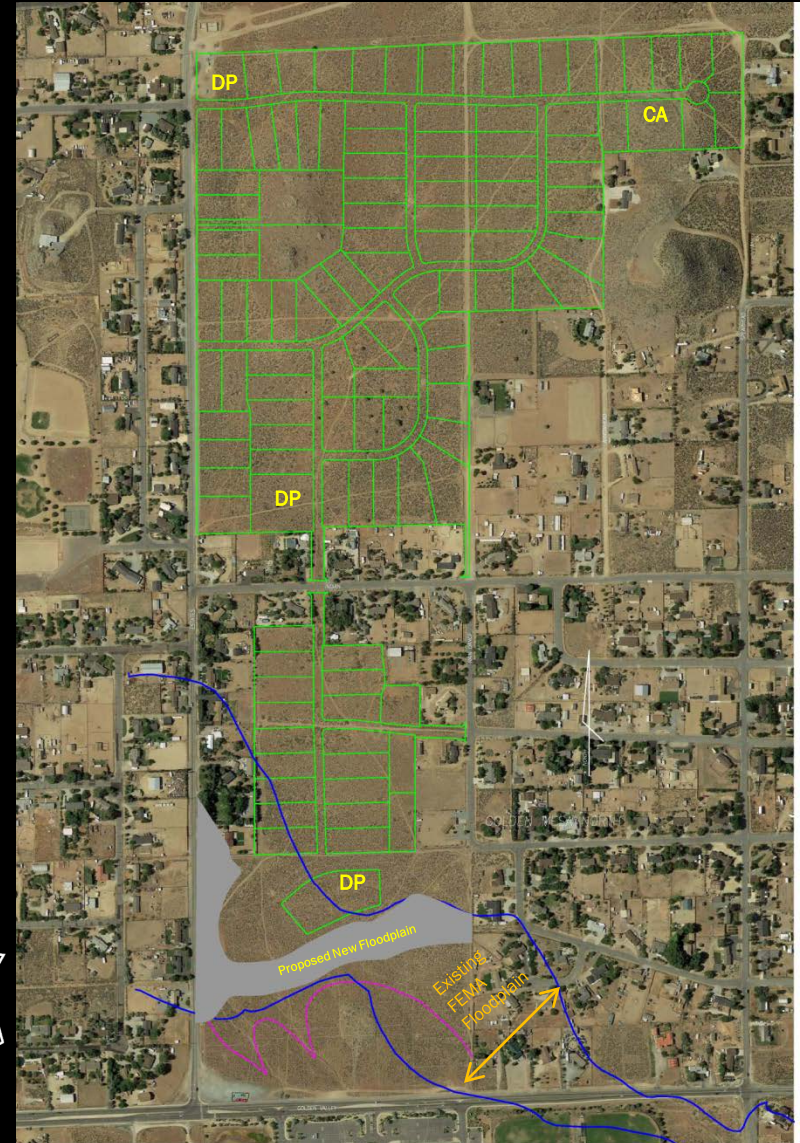


PROJECT MAP

- ✘ Tentative Map to establish 115 lots on 120 + acres.
- ✘ Average Lot Size 39,984
- ✘ Minimum Lot Size 35,000
- ✘ Maximum Lot size 113,700

Design Elements

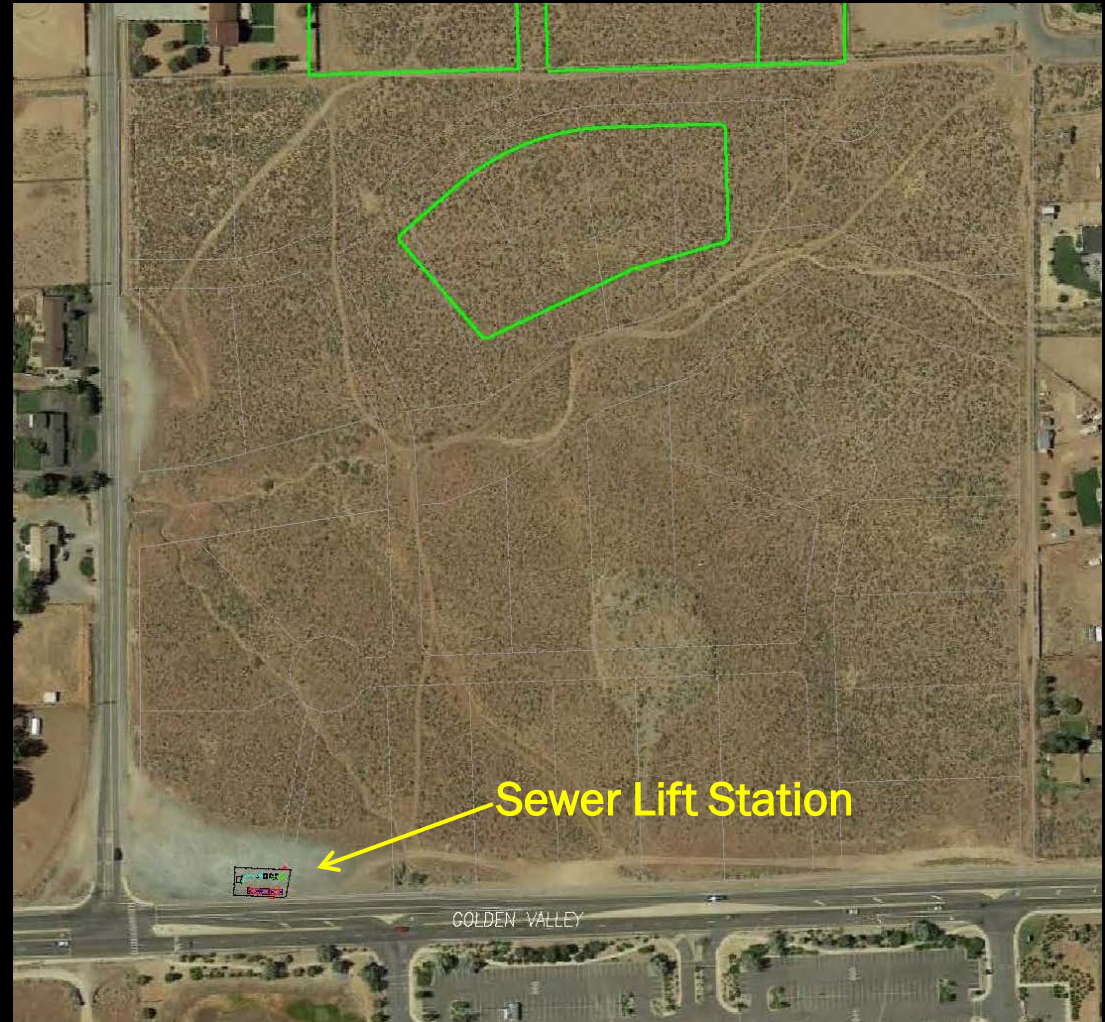
- ✘ Curb & gutter, sidewalks
- ✘ Estates Rd to remain roadside channel
- ✘ No streetlights
- ✘ Sewer, water & storm drains
- ✘ 3 Detention ponds
- ✘ Revised floodplain



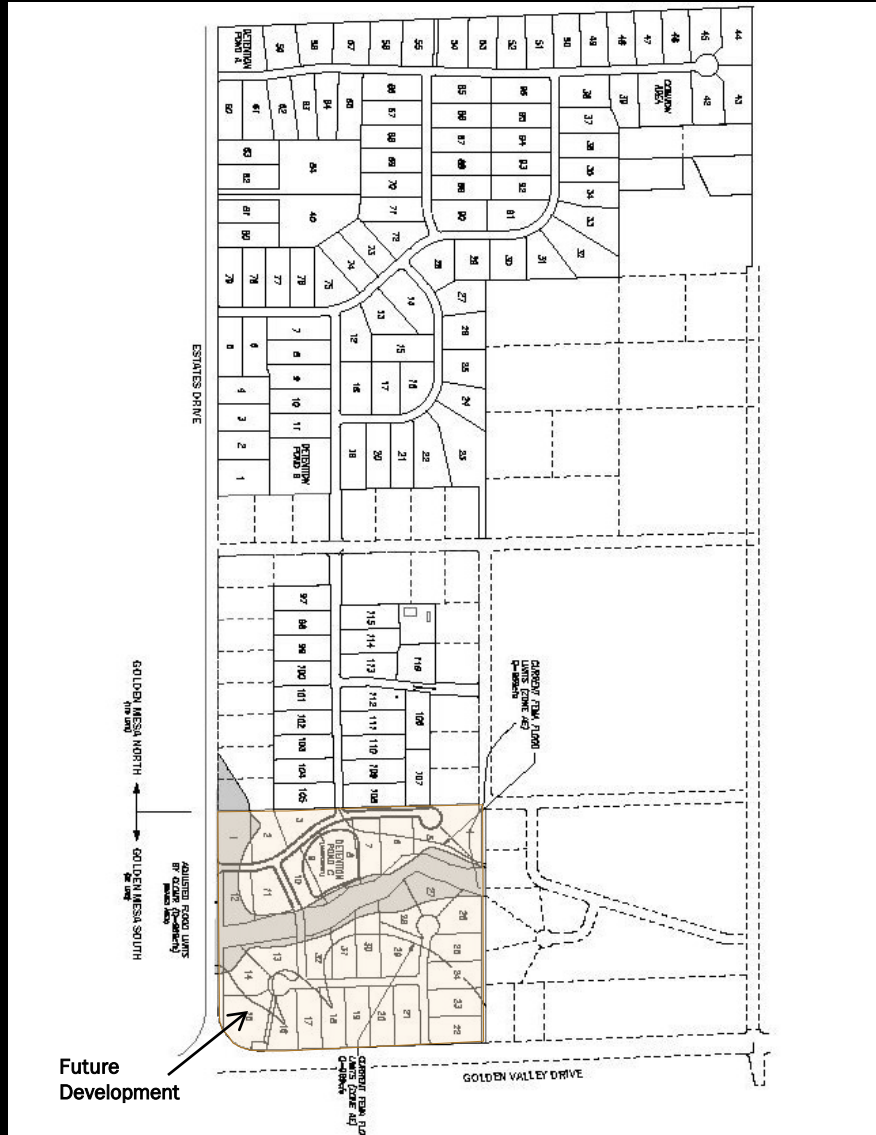
SPECIAL USE PERMIT

Sewer Lift Station

- ✘ Location – Northeast corner of Golden Valley Drive & Estates Rd.
- ✘ 2800 Sq ft fenced area
- ✘ Maintained by City of Reno



GOLDEN MESA NORTH



GOLDEN MESA NORTH

Thank You

Questions???

NORTH VALLEY'S AERIAL MAP

